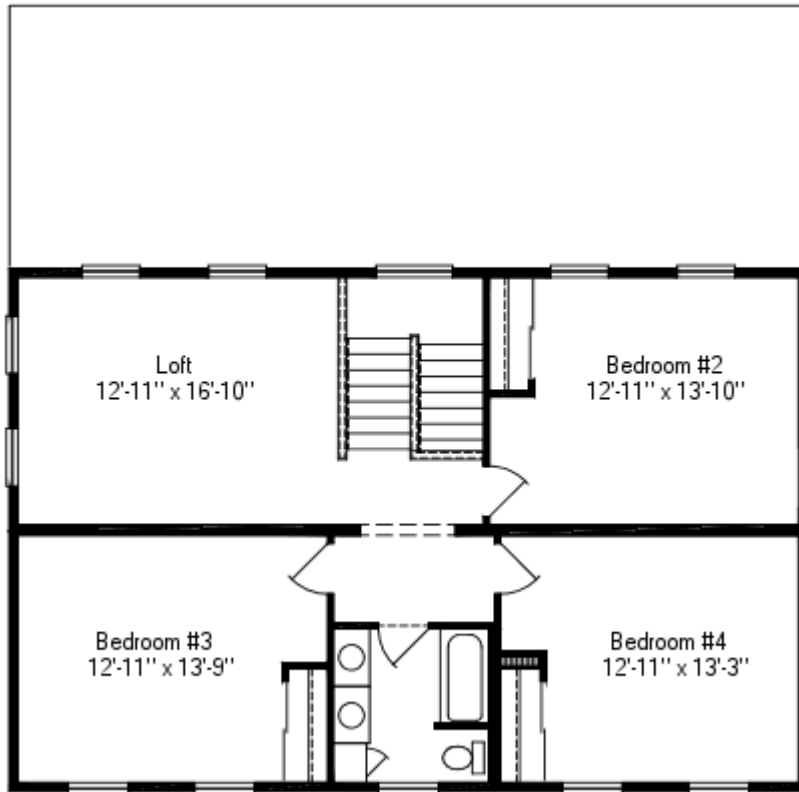


# Worthington II C.42

Basement 27'-4" x 42', 2803 Sq. Ft. Living Area



## Options

- Basement 27'-4" x 42'
- Standard Master Bath
- Standard Utility Room

## Features

- Andersen Double Hung Tilt Windows with Low E High Performance Glass
- Andersen Gliding Door with Low E High Performance Glass
- Kohler Tub, Shower Unit, and Faucets
- DuPont Tyvek House Wrap
- HAAS Oak Cabinets
- 2 x 6 Exterior Walls, 16" on Center
- R-38 Ceiling Insulation - 12" Fiberglass Batt
- R-19 Insulation in Exterior Walls 6" Fiberglass Batt
- R-13 Floor Insulation - 3 1/2" Fiberglass Bat
- Plumb-Pex® Water Line System
- PVC Waste Lines

# Worthington II C.42

Basement 27'-4" x 42', 2803 Sq. Ft. Living Area



## Options

- Basement 27'-4" x 42'
- Standard Master Bath
- Standard Utility Room

## Features

- Andersen Double Hung Tilt Windows with Low E High Performance Glass
- Andersen Gliding Door with Low E High Performance Glass
- Kohler Tub, Shower Unit, and Faucets
- DuPont Tyvek House Wrap
- HAAS Oak Cabinets
- 2 x 6 Exterior Walls, 16" on Center
- R-38 Ceiling Insulation - 12" Fiberglass Batt
- R-19 Insulation in Exterior Walls 6" Fiberglass Batt
- R-13 Floor Insulation - 3 1/2" Fiberglass Bat
- Plumb-Pex® Water Line System
- PVC Waste Lines

# Worthington II C.42

---

Basement 27'-4" x 42', 2803 Sq. Ft. Living Area