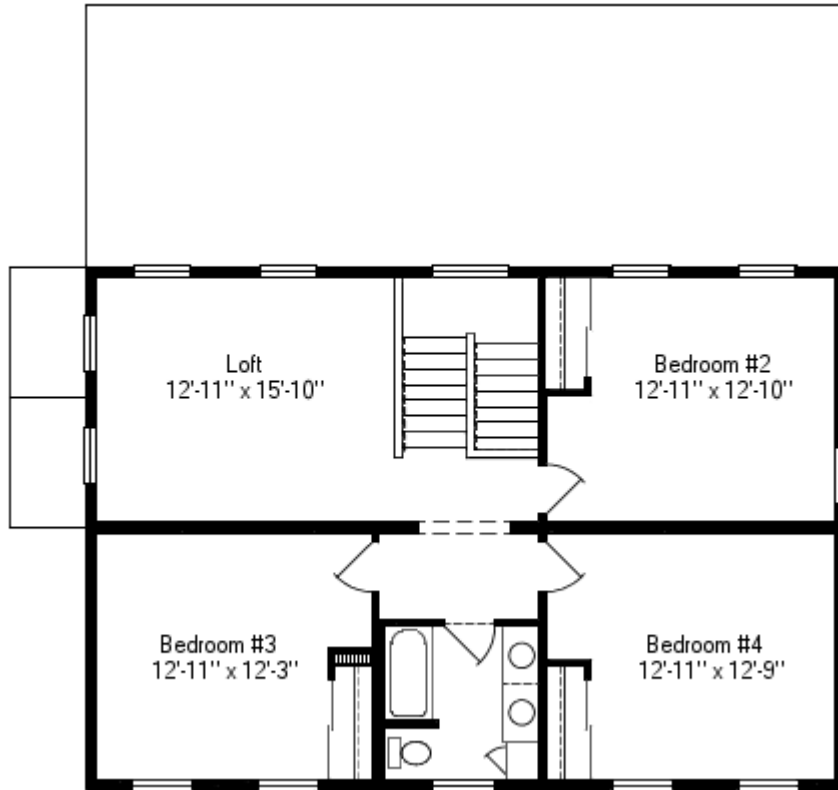


Worthington I A.40/44

Basement 27'-4" x 40/44', 2721 Sq. Ft. Living Area



Options

- Basement 27'-4" x 40/44'

Features

- Andersen Double Hung Tilt Windows with Low E High Performance Glass
- Andersen Gliding Door with Low E High Performance Glass
- Kohler Tub, Shower Unit, and Faucets
- DuPont Tyvek House Wrap
- HAAS Oak Cabinets
- 2 x 6 Exterior Walls, 16" on Center
- R-38 Ceiling Insulation - 12" Fiberglass Batt
- R-19 Insulation in Exterior Walls 6" Fiberglass Batt
- R-13 Floor Insulation - 3 1/2" Fiberglass Bat
- Plumb-Pex® Water Line System
- PVC Waste Lines

Worthington I A.40/44

Basement 27'-4" x 40/44', 2721 Sq. Ft. Living Area



Options

- Basement 27'-4" x 40/44'

Features

- Andersen Double Hung Tilt Windows with Low E High Performance Glass
- Andersen Gliding Door with Low E High Performance Glass
- Kohler Tub, Shower Unit, and Faucets
- DuPont Tyvek House Wrap
- HAAS Oak Cabinets
- 2 x 6 Exterior Walls, 16" on Center
- R-38 Ceiling Insulation - 12" Fiberglass Batt
- R-19 Insulation in Exterior Walls 6" Fiberglass Batt
- R-13 Floor Insulation - 3 1/2" Fiberglass Bat
- Plumb-Pex® Water Line System
- PVC Waste Lines

Worthington I A.40/44

Basement 27'-4" x 40/44', 2721 Sq. Ft. Living Area