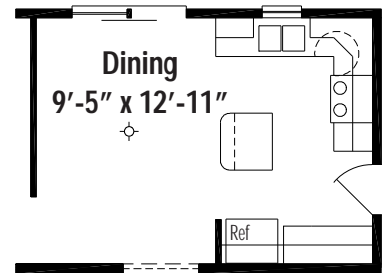
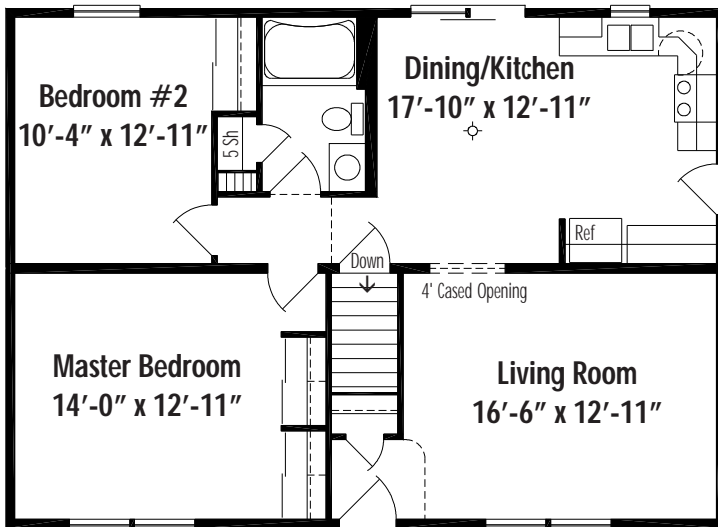


Mayberry B • Traditional Ranch



Kitchen Option RI
Island Kitchen

Mayberry B Basement 27'-4" x 38', 1039 Sq. Ft. Living Area

Floor plan dimensions are approximate. Artist's floorplans, elevation renderings and photographs are for illustration purposes only and may include optional features. Garages, porches and other attachments are not included unless specified in the written contract. All construction details and specifications must be written in the contract. No oral conditions.



©2005 Unibilt Industries, Inc.
All Right Reserved