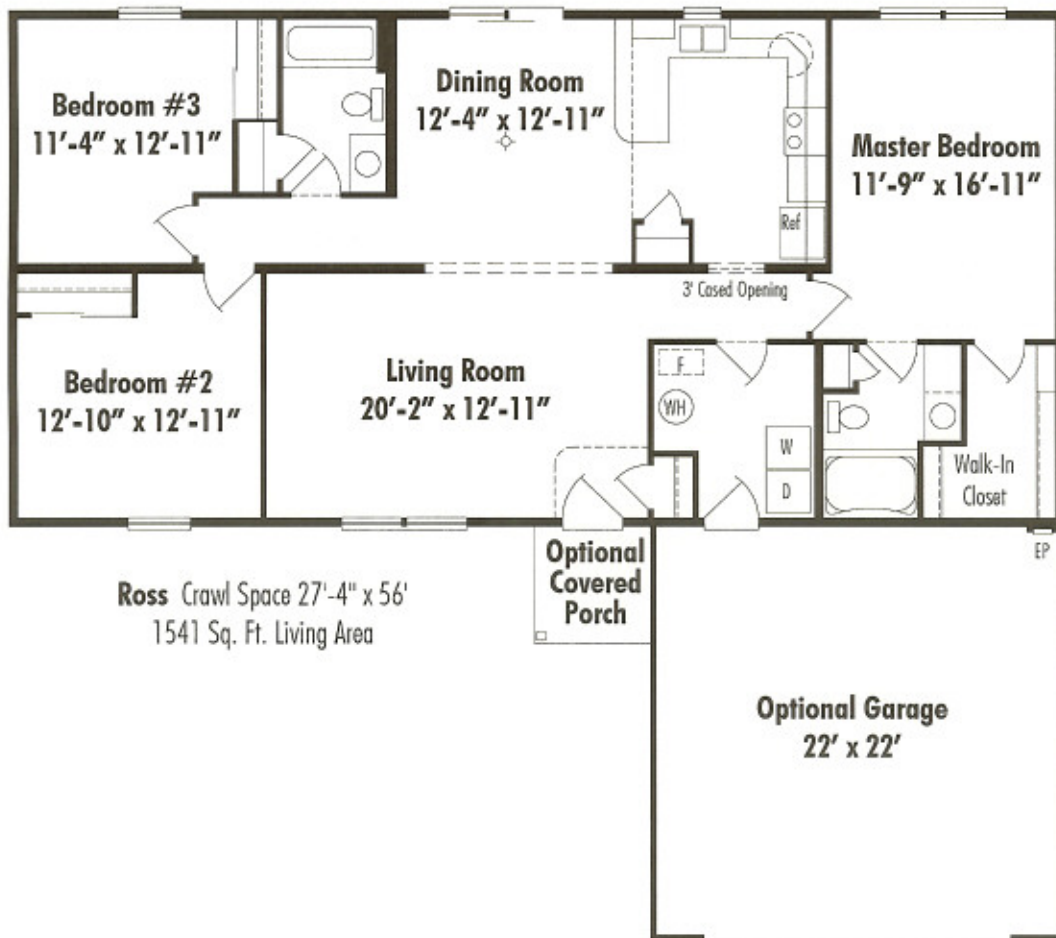
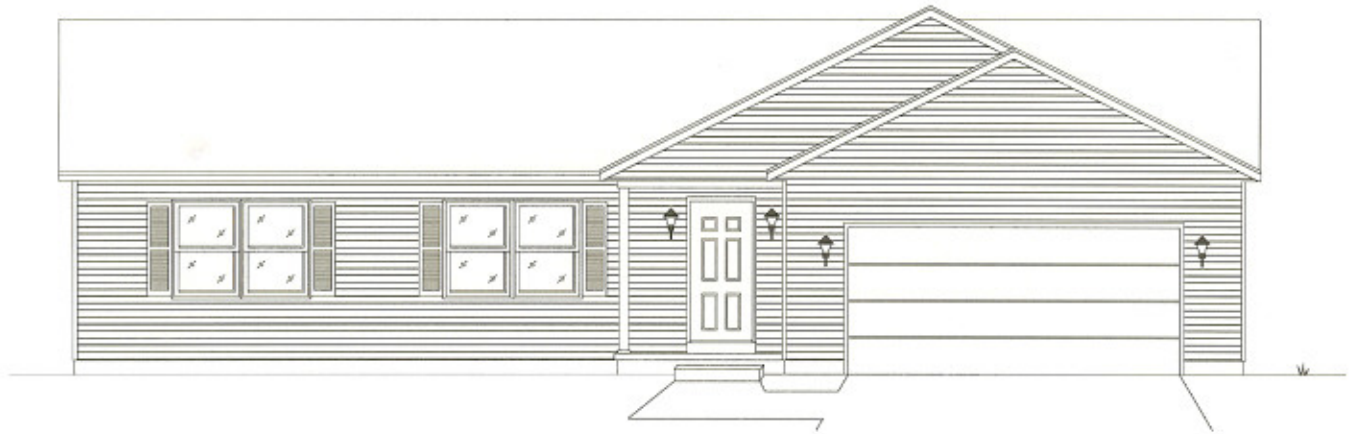


The Ross



Quality Features

Floors

2 x 10 Floor Joist, 16" on Center (13'-8" Modules)
¾" OSB Tongue and Groove Subfloor

Exterior Walls

2 x 6 Exterior Walls, 16" on Center

Exterior

¾" Sub-Siding on Full Perimeter on Each
Module Including Center Marriage Wall
House Wrap
Alcoa Low Maintenance Vinyl Siding
Alcoa Low Maintenance Vinyl Soffit Roof Overhang
Alcoa Low Maintenance Vinyl Gable Roof Overhang
Low Maintenance Vinyl Shutters Per Plan
Metal Clad Insulated Exterior Doors (No Glass - Primed)
Vinyl Single Hung Tilt Windows with Double Insulated
Low E Glass
Vinyl Gliding Door with Double Insulated Low E Glass

Roof

6/12 Pitch Roof Truss System, 24" on Center
7/16" OSB Roof Sheathing
Shingle Underlayment Felt Paper
Seal-Down Fiberglass Asphalt Roof Shingles (30 Year)
Shingle Vent
11" Eaves Overhang

Insulation

R-38 Ceiling Insulation - 12" Fiberglass Batt
R-19 Insulation in Exterior Walls - 6" Fiberglass Batt

Interior

8' Ceilings
2 x 4 Interior Walls, 24" on Center
2 x 3 Center Marriage Wall, 16" on Center, on Each Side
½" Drywall with Smooth Finish on Walls
½" High Strength Drywall with Smooth or Textured
Finish on Ceilings
All Interior Drywall Surfaces are Primed with White
Latex Paint
Painted 6 panel Molded Wood Fiber Interior Doors
Painted FJ Pine Interior Trim - 2 1/4" Casing, 3" Base
Ventilated Shelving in Closets

Floor Coverings

25 oz. Wall-to-Wall Carpeting with 7/16" Pad in Living
Room, Family Room, Dining Room, Bedrooms and Hall
Floor Vinyl in Kitchen, Baths, Utility and Entry Foyer

Kitchen Features

Homestead Oak Kitchen Cabinets
Laminate Counter Top
8" Deep Stainless Steel Double Bowl Sink
Delta Single Lever Faucet with Spray
Range Hood

Bathroom Features

Homestead Oak Bathroom Vanities
Laminate Vanity Top with Ceramic Bowl
Medicine Cabinet or Mirror (Per Plan)
Fiberglass Tub and Shower Unit
Delta Single Lever Faucets

Heating

Prepped For Forced Air Heating
Toe Kick Registers in Kitchen and Baths

Plumbing

Plumb-Pex® Water Line System
PVC Waste lines
Plumbing Hook-Ups for Washer in Utility Room
Frost Proof Outside Water Faucets (2)
50 Gallon Electric Water Heater

Electric

All Electric Work in Accordance with National
Electric Code
200 AMP Electric Circuit Breaker Service
Smoke Alarms Per Code
Door Chimes
Interior and Exterior Lighting Fixtures
Bedroom Ceiling Lights
Paddle Fan Prep in Dining Room and Bedrooms
Recess Can Lights in Kitchen
Fan/Light Combination in all Baths
Exterior Weatherproof Electric Outlets in Front
and Rear
220 Volt Outlet for Dryer in Utility Room