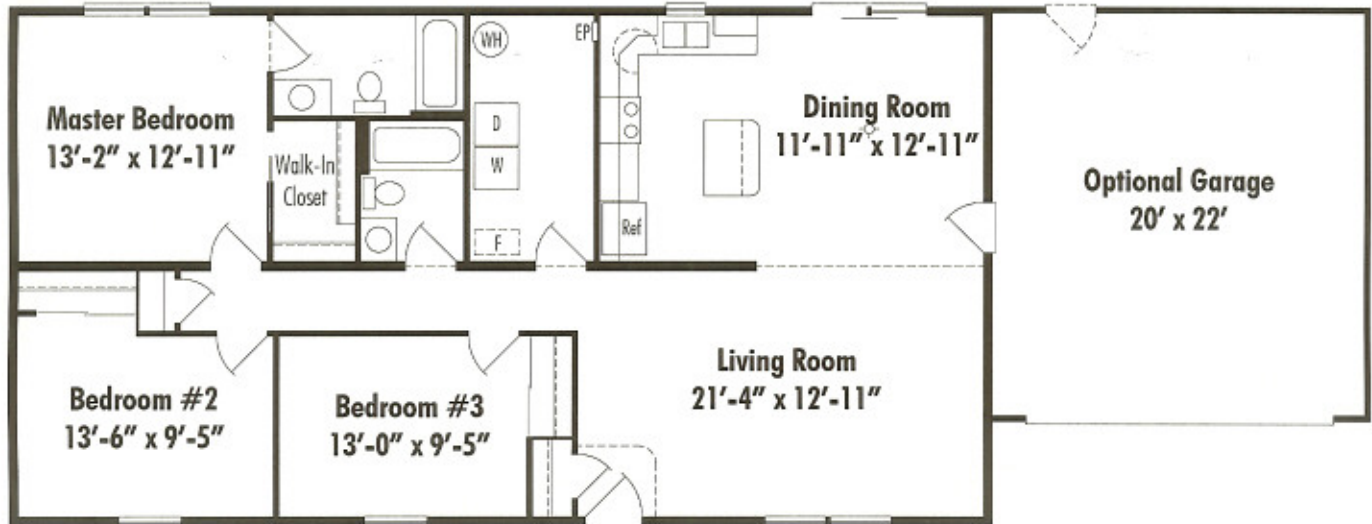
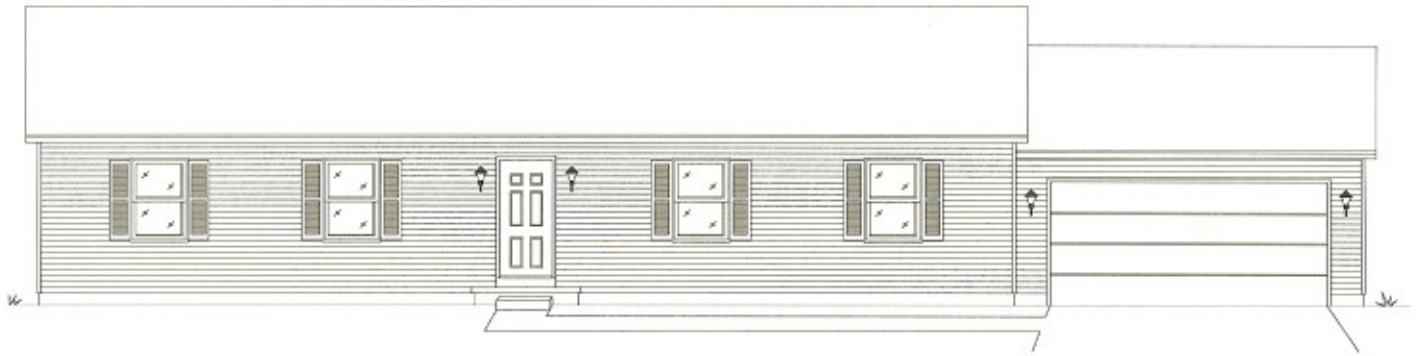


# The Jackson



**Jackson** Crawl Space 27'-4" x 52', 1431 Sq. Ft. Living Area

# Quality Features

## Floors

2 x 10 Floor Joist, 16" on Center (13'-8" Modules)  
¾" OSB Tongue and Groove Subfloor

## Exterior Walls

2 x 6 Exterior Walls, 16" on Center

## Exterior

3/8" Sub-Siding on Full Perimeter on Each  
Module Including Center Marriage Wall  
House Wrap  
Alcoa Low Maintenance Vinyl Siding  
Alcoa Low Maintenance Vinyl Soffit Roof Overhang  
Alcoa Low Maintenance Vinyl Gable Roof Overhang  
Low Maintenance Vinyl Shutters Per Plan  
Metal Clad Insulated Exterior Doors (No Glass - Primed)  
Vinyl Single Hung Tilt Windows with Double Insulated  
Low E Glass  
Vinyl Gliding Door with Double Insulated Low E Glass

## Roof

6/12 Pitch Roof Truss System, 24" on Center  
7/16" OSB Roof Sheathing  
Shingle Underlayment Felt Paper  
Seal-Down Fiberglass Asphalt Roof Shingles (30 Year)  
Shingle Vent  
11" Eaves Overhang

## Insulation

R-38 Ceiling Insulation - 12" Fiberglass Batt  
R-19 Insulation in Exterior Walls - 6" Fiberglass Batt

## Interior

8' Ceilings  
2 x 4 Interior Walls, 24" on Center  
2 x 3 Center Marriage Wall, 16" on Center, on Each Side  
½" Drywall with Smooth Finish on Walls  
½" High Strength Drywall with Smooth or Textured  
Finish on Ceilings  
All Interior Drywall Surfaces are Primed with White  
Latex Paint  
Painted 6 panel Molded Wood Fiber Interior Doors  
Painted FJ Pine Interior Trim - 2 1/4" Casing, 3" Base  
Ventilated Shelving in Closets

## Floor Coverings

25 oz. Wall-to-Wall Carpeting with 7/16" Pad in Living  
Room, Family Room, Dining Room, Bedrooms and Hall  
Floor Vinyl in Kitchen, Baths, Utility and Entry Foyer

## Kitchen Features

Homestead Oak Kitchen Cabinets  
Laminate Counter Top  
8" Deep Stainless Steel Double Bowl Sink  
Delta Single Lever Faucet with Spray  
Range Hood

## Bathroom Features

Homestead Oak Bathroom Vanities  
Laminate Vanity Top with Ceramic Bowl  
Medicine Cabinet or Mirror (Per Plan)  
Fiberglass Tub and Shower Unit  
Delta Single Lever Faucets

## Heating

Prepped For Forced Air Heating  
Toe Kick Registers in Kitchen and Baths

## Plumbing

Plumb-Pex® Water Line System  
PVC Waste lines  
Plumbing Hook-Ups for Washer in Utility Room  
Frost Proof Outside Water Faucets (2)  
50 Gallon Electric Water Heater

## Electric

All Electric Work in Accordance with National  
Electric Code  
200 AMP Electric Circuit Breaker Service  
Smoke Alarms Per Code  
Door Chimes  
Interior and Exterior Lighting Fixtures  
Bedroom Ceiling Lights  
Paddle Fan Prep in Dining Room and Bedrooms  
Recess Can Lights in Kitchen  
Fan/Light Combination in all Baths  
Exterior Weatherproof Electric Outlets in Front  
and Rear  
220 Volt Outlet for Dryer in Utility Room