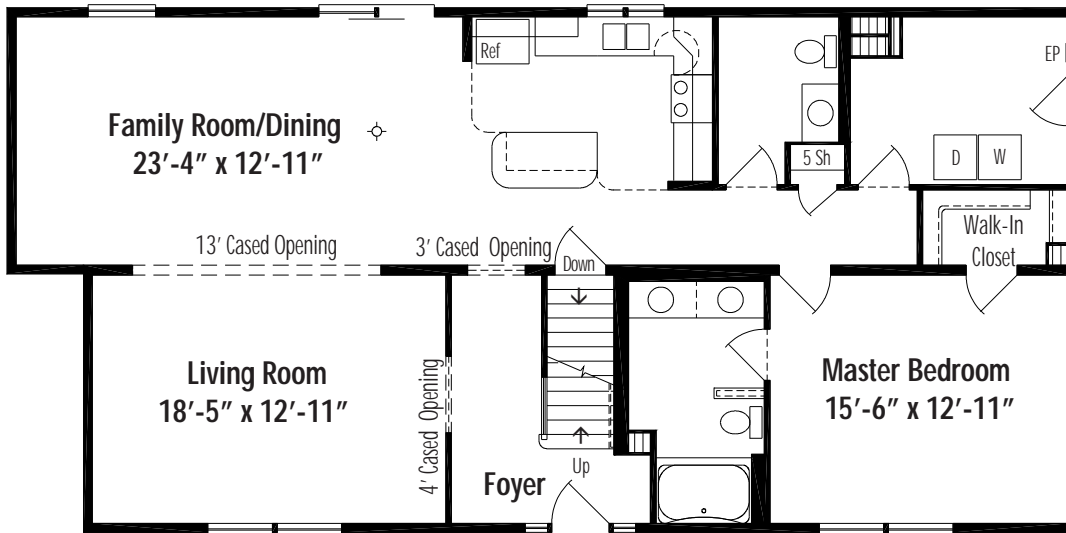
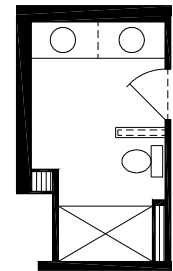


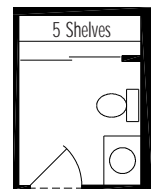
# Newport B • Traditional Cape Cod



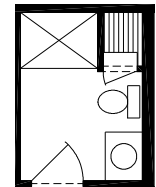
Newport B Basement 27'-4" x 52'/56', First Floor Living Area 1476 Sq. Ft.



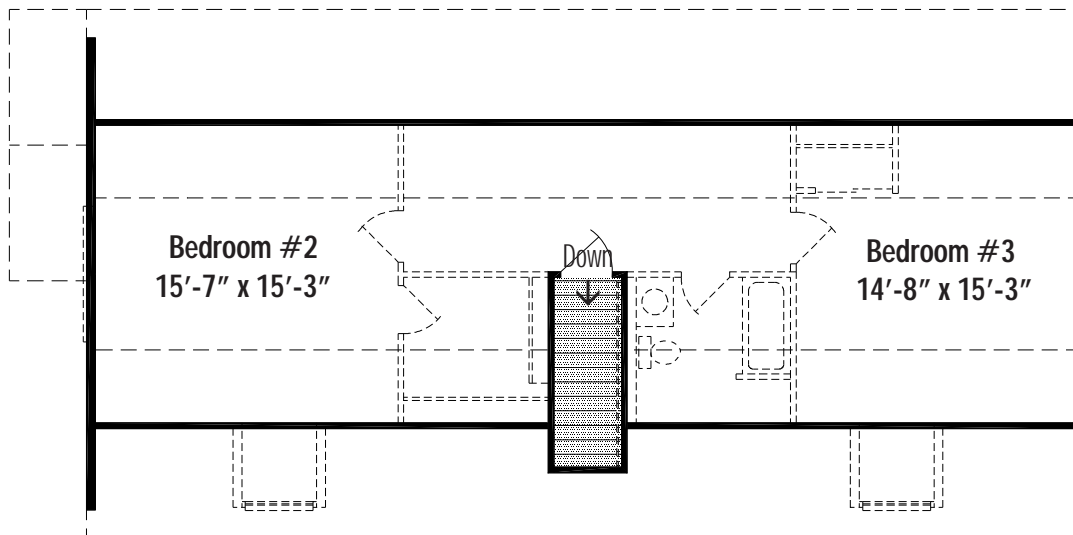
Master Option NPB1  
5' Shower



Hall Bath Option NPH2  
Linen Closet



Hall Bath Option NPH1  
4' Shower



Layout A Front Stairwell Second Floor Living Area 806 Sq. Ft.

Floor plan dimensions are approximate. Artist's floorplans, elevation renderings and photographs are for illustration purposes only and may include optional features. Garages, porches and other attachments are not included unless specified in the written contract. All construction details and specifications must be written in the contract. No oral conditions.